

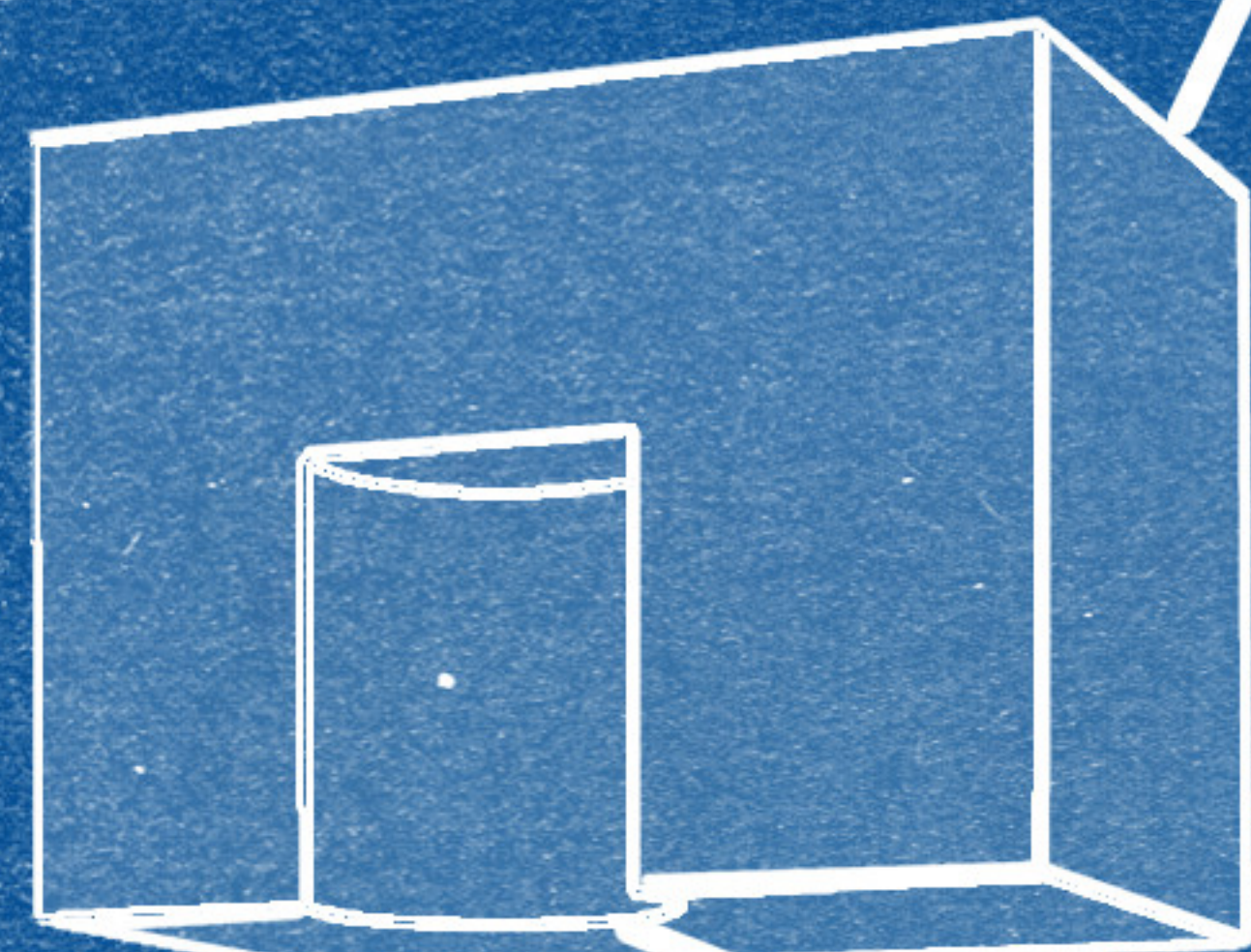
TIP SHEET

NO. 007

3 TOOL MALLET

Joint

Head



Mortise.

Bore with 1" auger or **spade bit**.

Wedge

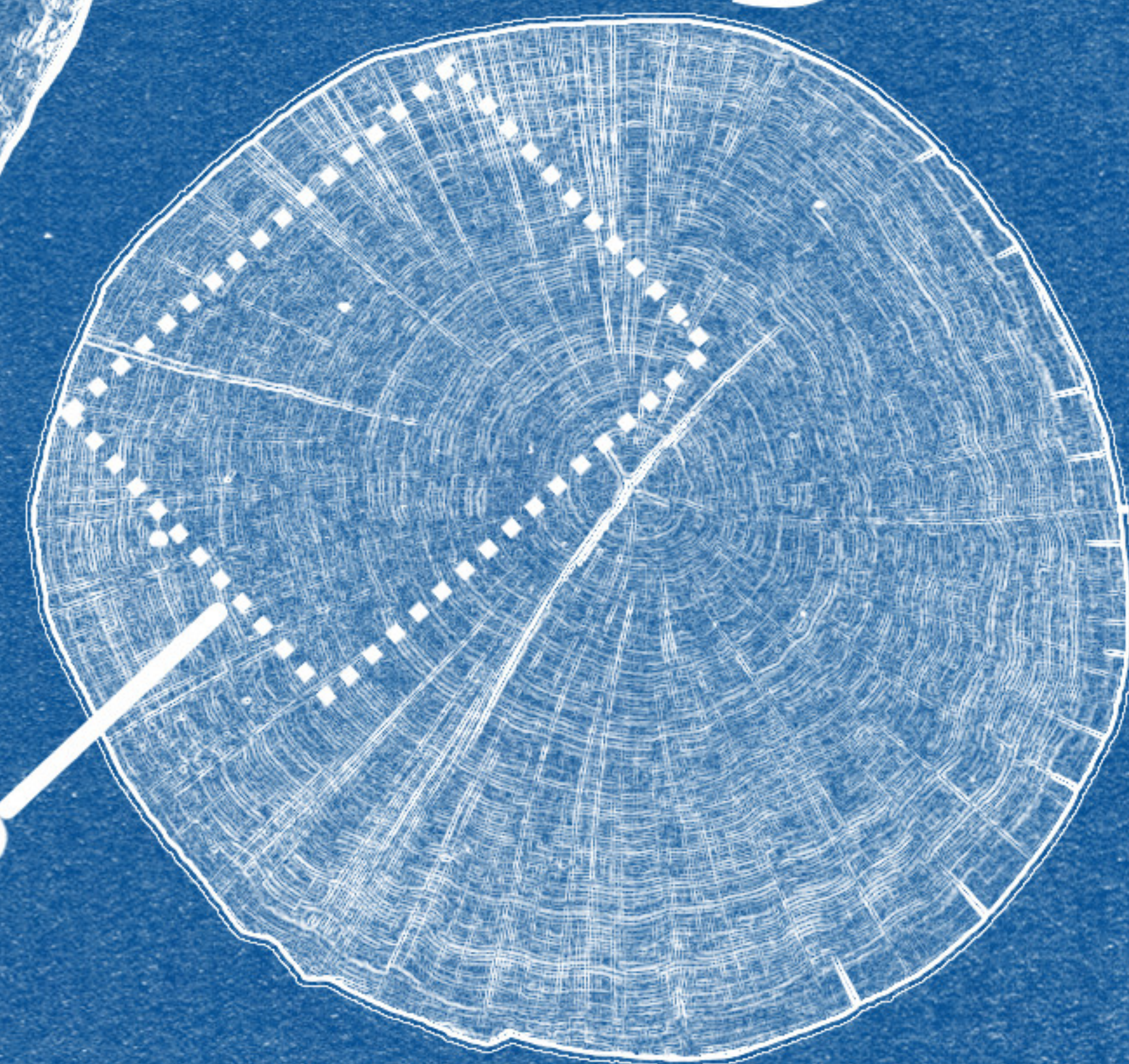
Wedge is longer than mortise. Top of mortise drives the wedge in

Tenon. Sized to mortise

Handle

Head can be any ring-porus hardwood. 3x4x6 inches is a good approximate size.

Log

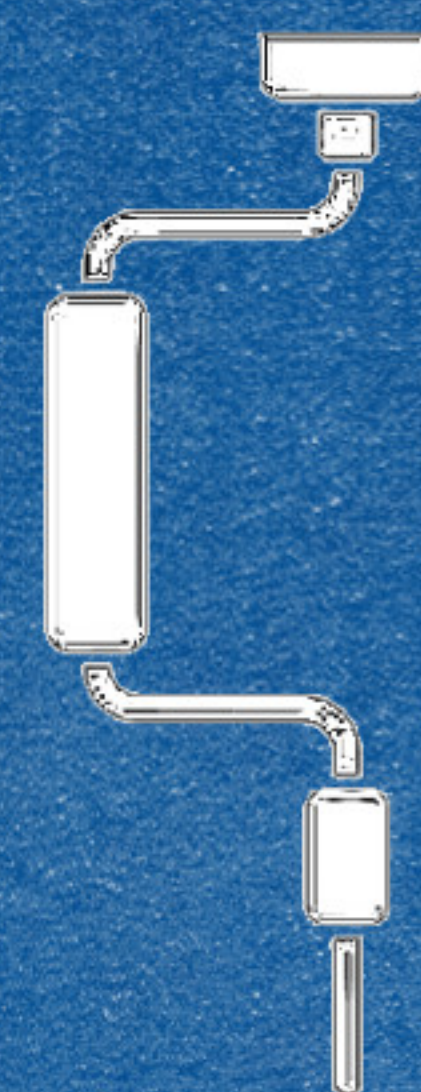


Split head from green log. Avoid the pith.

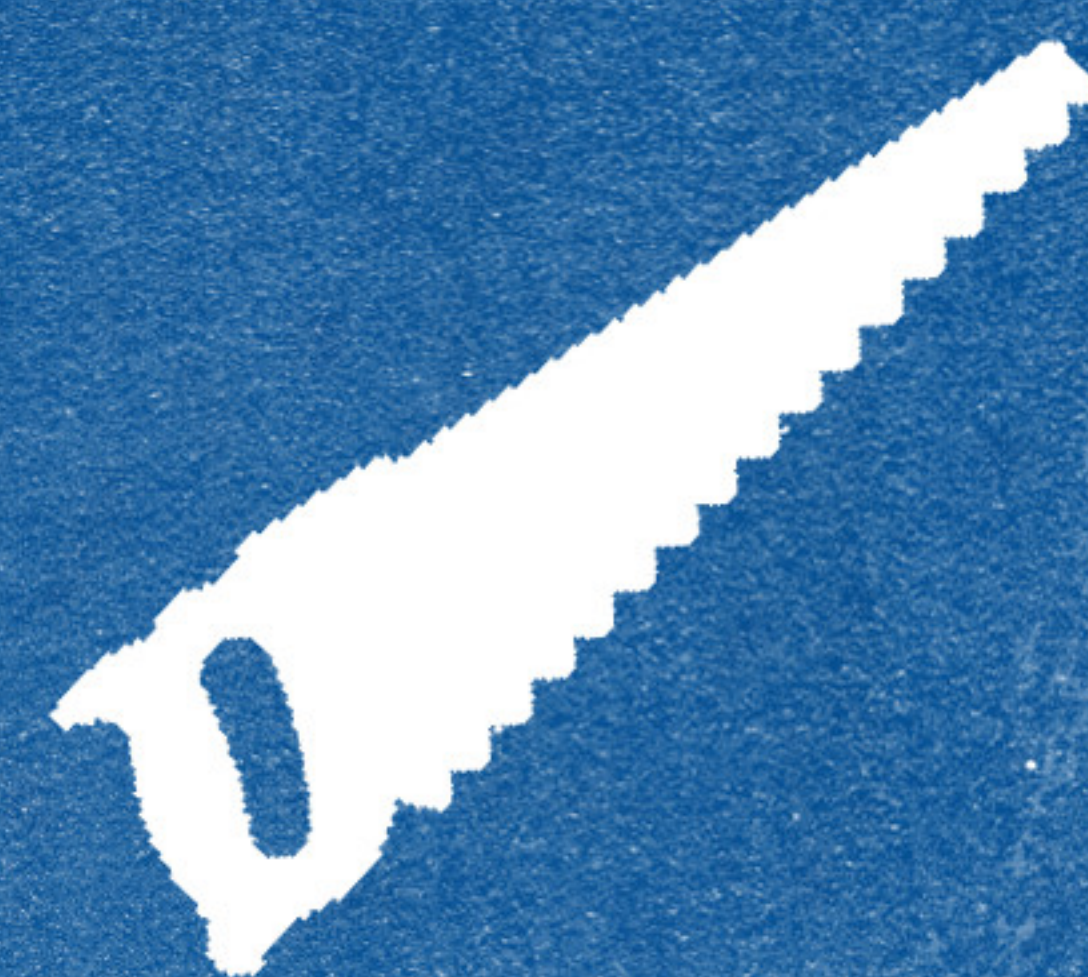
Handle. Any hardwood.



Standard camping hatchet. Shallow, flat bevels are best. Sharpen with **oilstones** to a keen edge. Chop to shape curves and bevels. Use like a plane to smooth surfaces.



Bit brace and one-inch auger bit. Substitute electric drill and **spade bit**.



Any handsaw. Fine tooth is best. I used a **Vaughn Bear Saw**.

Watch the video here



www.rexkrueger.com



@rexkrueger